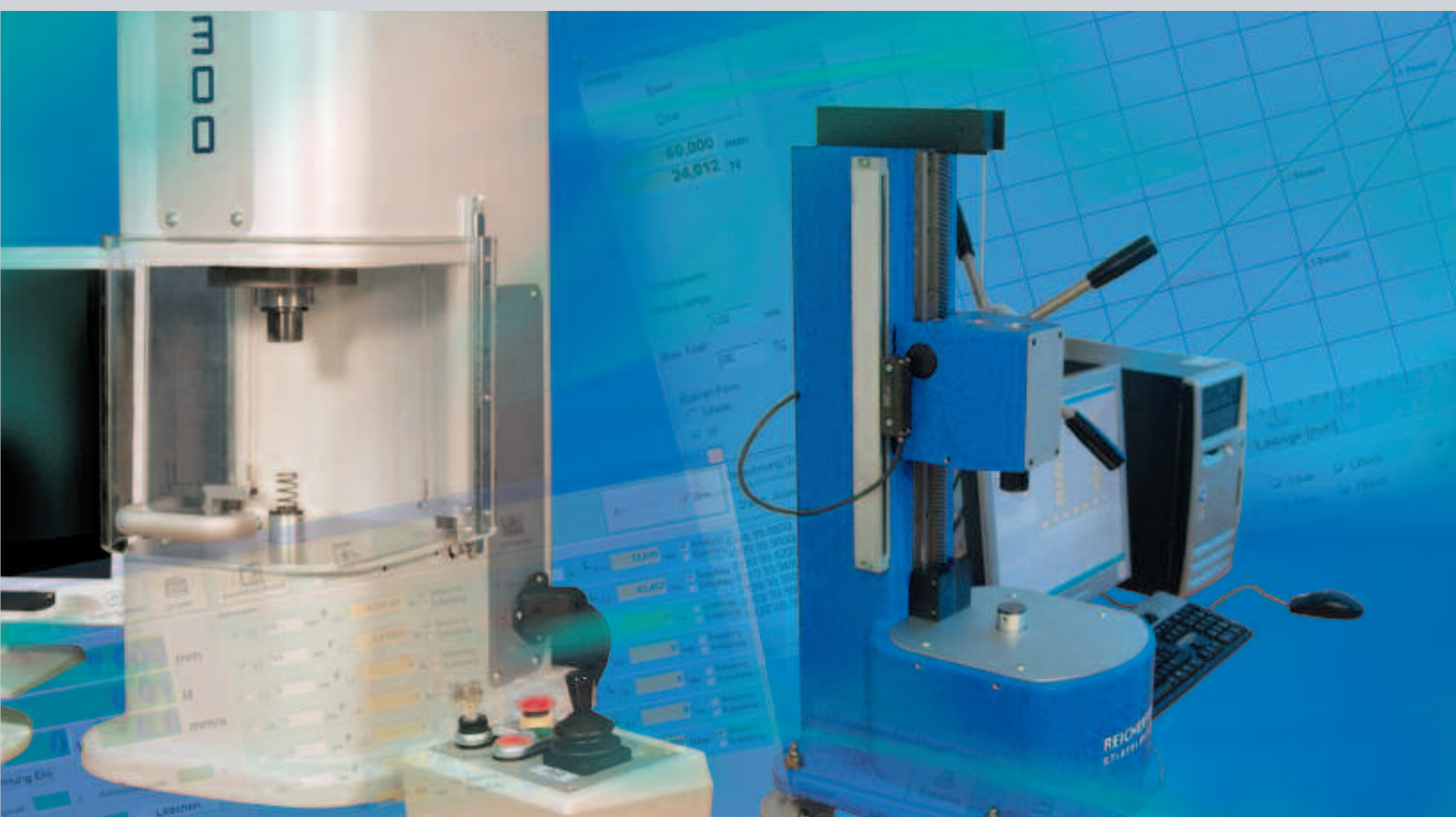


STIEFELMAYER

REICHERTER Spring Testing



**ELASTICOMETER E300 / ELASTICOMETER E150**

# Efficiency in Spring Testing

**Our entry system –  
ELASTICOMETER E150**

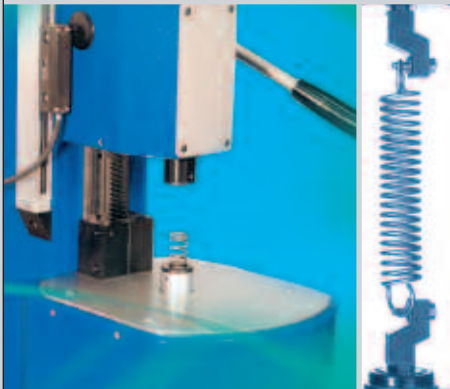
STIEFELMAYER presents a solid manual low cost spring testing machine.

To display, evaluate and administrate the measuring results, the customer can use the specially developed PC software WIN-Elast.

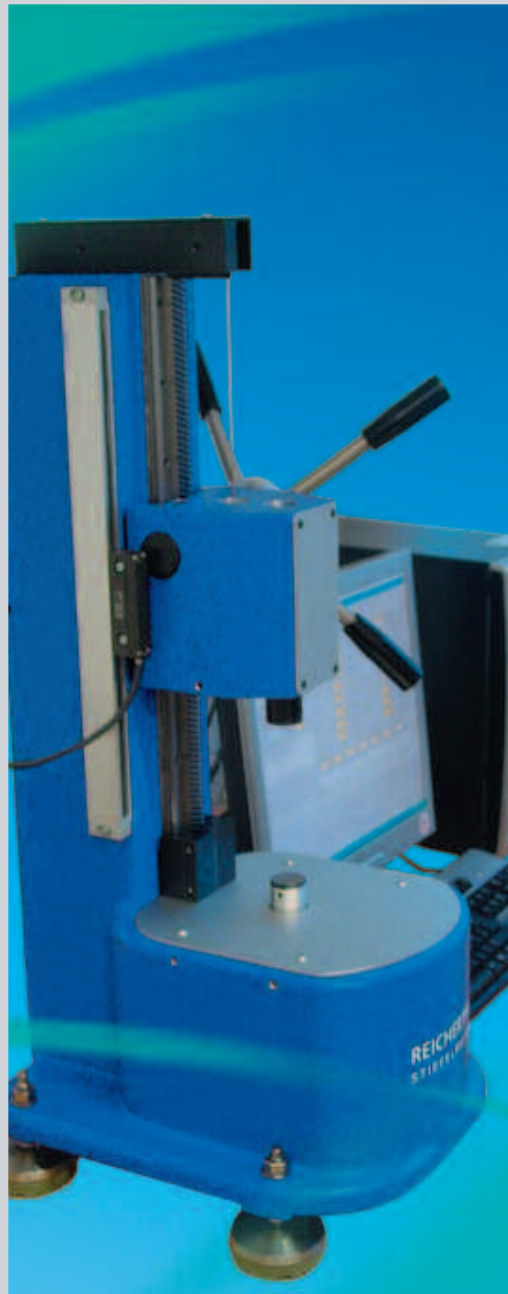
Picture 2 from left:  
**tension spring testing facility**

**ELASTICOMETER E150 –  
special features:**

- modular system makes the selection of different force ranges possible up to a maximum load of 500N
- further features E150: see description E300, special features

**ELASTICOMETER E300 –  
special features:**

- modular system makes the selection of different force ranges possible up to a maximum load of 2000N
- high-precision force sensor with mechanical overload protection
- highly accurate guidance of the test axis
- specially developed Windows software WIN-Elast with many user-friendly features as well as highest performance and comfort.
- highly accurate test results due to an innovative measuring technology:
  - resolution length: 0.01 mm
  - resolution force: max. 0.01N (depending on the load range)
- various accessories
  - tension spring testing facility
  - thorn testing facility
- Measuring accuracy according to DIN EN ISO 7500 – 1, Class 0.5

**Manual Spring Testing Machine –  
ELASTICOMETER E300**

The ELASTICOMETER E300 is a solid manual spring testing machine offering a very attractive cost-performance ratio.

These machines provide a maximum test height of 300 mm and are suitable to measure even closely tolerated springs.

Evaluation and administration of the measuring values is also done by the PC software WIN-Elast.

**ELASTICOMETER E300 / E150:  
Dimensions – Data – Facts**

- **test height E300:**  
0-300 mm
- **test height E150:**  
0-150 mm
- **diameter pressure disc E300 / E150:**  
min. 30 mm  
max. 80 mm
- further sizes on demand!

Top right:  
**ELASTICOMETER E150**  
Central and left:  
**ELASTICOMETER E300**

# Flexibility in Spring Testing

## Automatic Spring Testing – ELASTICOMETER EM150 / EM300

With the ELASTICOMETER EM150 and EM300 STIEFELMAYER presents a new generation of spring testing machines driven by a motor spindle. Thus even series of highly precise springs can be tested fast and reliably.

To display, evaluate and administrate the measuring results, the customer can use the specially developed PC software WIN-Elast.

## ELASTICOMETER EM150 / EM300: Dimensions – Data – Facts

- **test height:**  
0-150 mm  
0-300 mm
- **diameter pressure disc:**  
min. 30 mm · max. 80 mm
- further sizes on demand!
- **traverse and setting rate:**  
max. 50 mm/s
- **test speed:**  
max. 30 mm/s  
(according the springs)
- special pressure plates

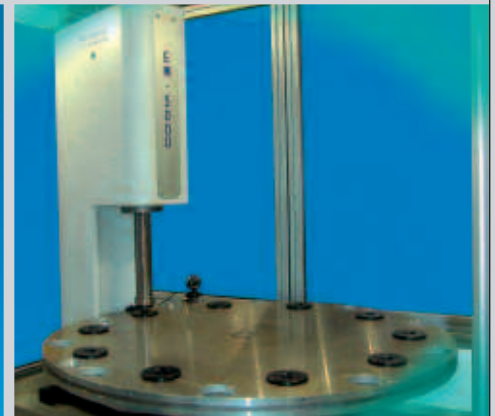
### Special features:

- due to a modular system you can choose from 2 versions:
  - EM150: max. load up to 2000N
  - EM300: max. load up to 5000N
- high-precision force sensor with mechanical overload protection
- highly accurate guidance of the test axis
- fast continuous measuring of all testing points
- automatic length calibration
- specially developed Windows software WIN-Elast with many user-friendly features as well as highest performance and comfort.
- highly accurate test results due to an innovative measuring technology:
  - resolution length: 0.001mm
  - resolution force: max. 0.001N (depending on the load range)
- various accessories and options:
  - LO determination with potential-free contact possible
  - thorn testing facility
  - linear compensation of the length
- measuring accuracy according to DIN EN ISO 7500 – 1, Class 0.5
- Operator protection by linkage of the control with the protective door



Top:  
**ELASTICOMETER EM300**

Bottom:  
**Control console with joystick for shift operation as well as for fast manual testing**



### Stiefelmayer-Reicherter Tailor-made Solutions

You can expect us to be your partner not only for proven standard systems. For many years we have been developing customised spring testing systems.

STIEFELMAYER-REICHERTER has the technical competence and many years of experience to build individual spring testers according to our customers' specific applications.

Top and bottom:  
**Automatic setting and testing machine with a motorised round table and triple sorting unit.**



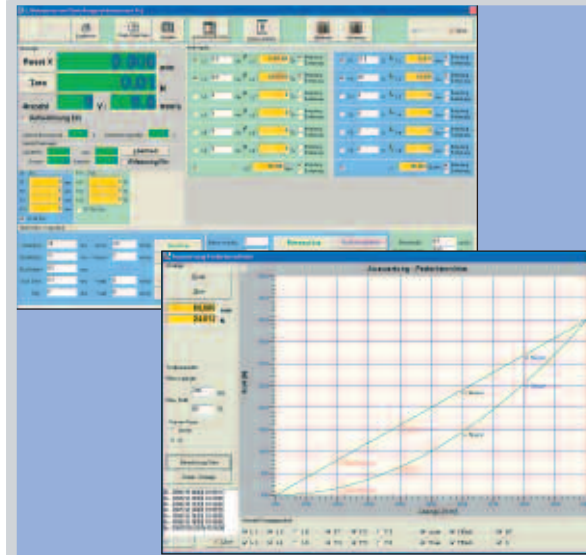
# PC-Software for Spring Testing Machines

## WIN-Elast

WIN-Elast is a specific Windows based software for spring testing.

WIN-Elast is easy to use and at the same time very flexible. Many additional features make this PC software an attractive solution and market leader for the evaluation of spring tests.

Right:  
display menu WIN-Elast  
and display of spring characteristic line



### Special features:

- easy to use data management of the complete test task
- various password levels
- storage of test results
- selection of testing points:
  - 6 forces (F1, ....F6)
  - 6 lengths (L1, ....L6)
- evaluation and display of spring rate and free spring length
- free calculation characters (e.g. L1-L2=s)
  - setting of tolerances for the calculation characters (e.g. s) possible
- easy choice of differential calculation by simple activation of desired length or force value
- free calculation of 6 different characters
- display and storage of spring characteristic line
- zoom function for display and print out of the spring characteristic line
- various options for display of the measurement values
- clear statistics
- print out of testing results and of the spring characteristic line on any regular printer (administration via Windows XP)

### Are you an owner of a used spring testing machine?

WIN-Elast does not only fit perfectly onto "Reicherter" spring testing machines but also onto the spring testers of many other producers. Please feel free to ask for our modernisation package!

## STIEFELMAYER – The Company Group at a Glance



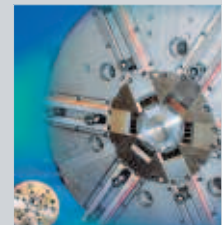
### STIEFELMAYER- Reicherter

- 3D coordinate metrology
- Hardness testing
- Spring testing



### STIEFELMAYER- Laser Technology

- Laser hardening
- Laser welding
- Laser cutting



### STIEFELMAYER- Clamping Tools

- Special chucks
- Special mandrels



### STIEFELMAYER- Production

- Job job production
- Precision parts

**STIEFELMAYER**

Stiefelmayer-Reicherter GmbH & Co. KG

Boschstraße 10  
D-73734 Esslingen

Phone: ++49 (0)711/490 4690-0  
Fax: ++49 (0)711/490 4690-13  
E-Mail: reicherter@stiefelmayer.de  
www.stiefelmayer.de

TU-Nr. 007 561 02 3/08