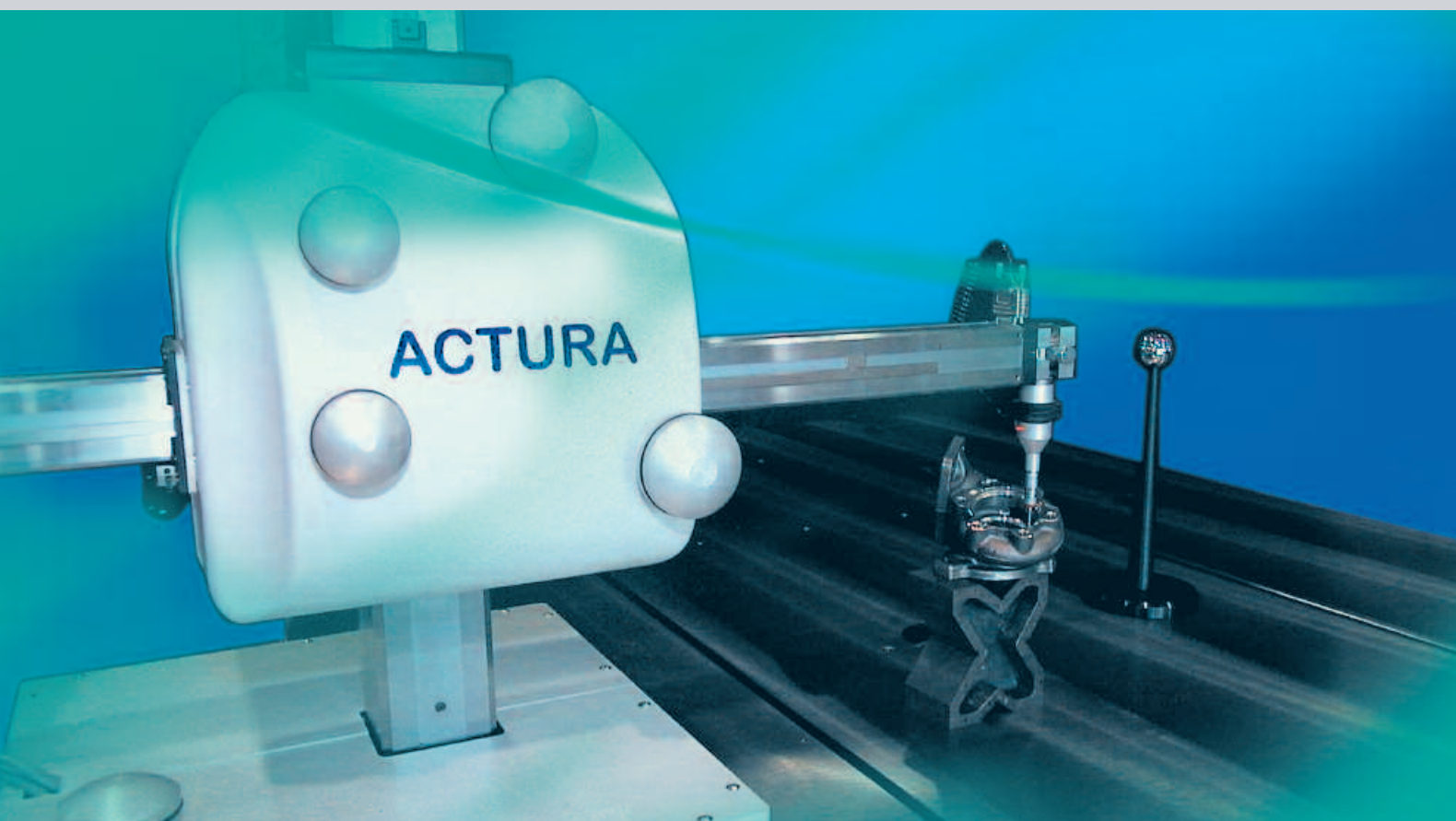


STIEFELMAYER

ACTURA –
Coordinate Metrology



STIEFELMAYER – the Gold Standard in Metrology

Convincing Technologies

Our transition from one of the first industrial manufacturers of measuring tools over 130 years ago to a globally operating high-tech corporation is the success story of a medium-sized, family-owned company that has always been keen to preserve a sense of tradition.

At the same time, we have never been afraid to trust in our own abilities. In hands-on experience. In flexibility. And in the financial and technical potential generated by innovations.

Consistent orientation towards our customers' requirements has made STIEFELMAYER one of the industry's leading problem-solvers: in metrology, in hardness testing as well as in laser systems and special clamping technology.

Bottom right:

Horizontal arm: The quality of STIEFELMAYER measuring machines is realised in details like the laser hardened horizontal arms. This technology minimises the torsion and ensures at the same time a maximum of long-term quality of the guide tracks.

STIEFELMAYER ACTURA

The STIEFELMAYER measuring and marking out machine ACTURA is an inexpensive solution for many applications:

- Marking and measuring of clay design models
- Marking of work pieces
- Dimensional inspection of devices and work pieces
- Measurement of parts

STIEFELMAYER Metrology – the complete programme:

Horizontal arm measuring machines

- FUTURA – manual · motorised · CNC version
- VENTURA – manual · motorised · CNC version
- ACTURA – manual · motorised version

Modernisations / Upgrades

- Measuring counter MZ 2000 for manual machines
- Controller modernisations
- Upgrades manual to motorised/ CNC version

Accessories

- Probe tools
- Auxiliary equipment
- Marking-out tools
- Centering tools
- 3D probe accessories
- Threaded styli
- Extensions
- Scanning sensors

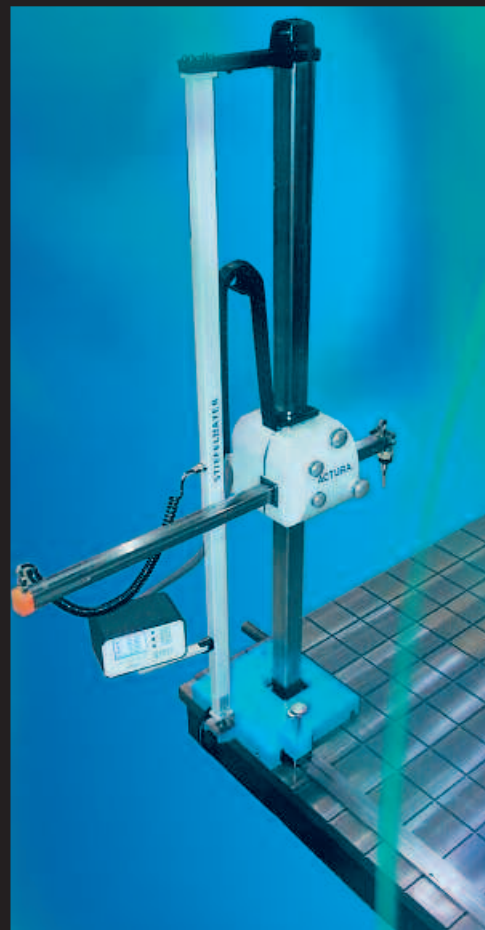
Measuring software

Service

- Calibrations
- Repairs
- Installations
- Machine moving

Used machines

Bottom left:
Measuring counter MZ 2000



The ACTURA machine can be delivered with moveable guides. Thus the machine can be moved around the work piece.

Single-column or multi-column machines are available in various sizes.

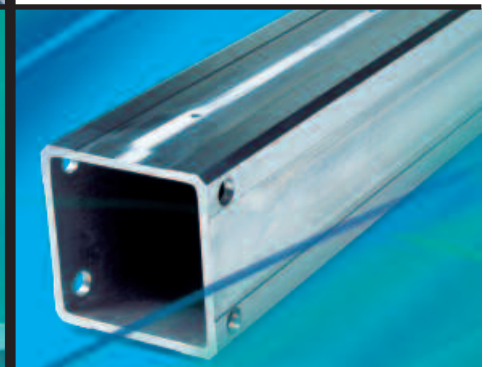
The ACTURA machine can also be mounted on existing measuring plates.

Further advantages:

- smooth running mechanics and motors
- high mechanical precision
- lasting quality
- measuring with or without evaluation software
- variable equipment options

Left:

ACTURA measuring machine: The measuring plate is available according to a variety of customer needs.



Dimensions – Data – Facts

- **Maximum measuring range**
X 20,000 mm, Y 1,800 mm,
Z 2,400 mm.
- **Column cross section**
160*160 mm or (up to Z 1,800mm)
100*100 mm
Horizontal arm cross section 80*80
mm or (with column cross section
100*100) 60*60 mm.
- **Smooth running in all axes through
the use of ball bearing technology.**
- **Measuring system:**
Sony magnetic measuring system
with 5 μ resolution.
- **Basic equipment:**
Measuring counter MZ 2000
- **Operating voltage:**
115/230V 50/60 Hz
- **Standard precision according to
VDI2617/ISO10360 for a machine
with measuring range
X2400 Y1200 Z1500:**
U3: 70+L/20<140 μ m

ACTURA

The following equipment packages are available:

- Terminal station "DELL" for measuring software
- Travelling TFT-screen and keyboard/mouse on a vertically adjustable holding device "niveaulift"
- Measuring software on demand, e. g. DELCAM, ZEISS HOLOS NT and Calypso, metrolog, metromec, FARO
- Probe equipment:
RENISHAW probes, scanning sensors, marking-out tools, mechanical probe tools
- Option:
motorised drives in all axes (only for column cross section 160*160)



Central:
**Measuring machine ACTURA, Y 1200,
Z 1500 mm, with measuring counter
MZ 2000 and 3D probe.**

Bottom right:
**Extension with scriber and scriber holder
for manual marking-out tasks**

Bottom left:
**Measuring cube – produced with high
precision, for safe and quick fixation of
measuring and marking-out tools**



STIEFELMAYER – The Company Group at a Glance



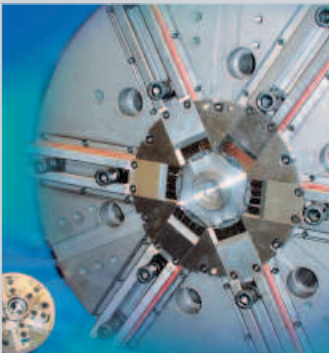
STIEFELMAYER- Reicherter

- 3D coordinate metrology
- Hardness testing
- Spring testing



STIEFELMAYER- Laser Technology

- Laser hardening
- Laser welding
- Laser cutting



STIEFELMAYER- Clamping Tools

- Special chucks
- Special mandrels



STIEFELMAYER- Production

- Job job production
- Precision parts



Stiefelmayer-Reicherter GmbH & Co. KG
Boschstraße 10
D-73734 Esslingen

Phone: +49 (0)711/490 4690-0
Fax: +49 (0)711/490 4690-13
E-Mail: reicherter@stiefelmayer.de
www.stiefelmayer.de